

10" Cornucopia Vase
10 in, 3900 575



10" Bud Vase
10 1/4 in, 1528

9" & 12"



6" Footed Flower Vase
6 in, 6004



4" Flower Vase
4 1/2 in, 1309 NON OPTIC



Basket Vase
8 1/2 in, 119



10" Flower Vase
10 5/8 in, 1242



8" Footed Flower Vase
8 1/2 in, 6004



6" Flower Vase
6 1/4 in, P 572



Ivy Ball Vase
1066



6" Topper (Top Hat)
1703



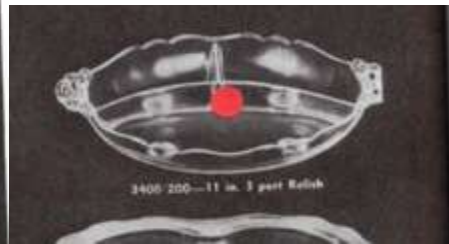
4 Part Celery
13 in, 3500 152



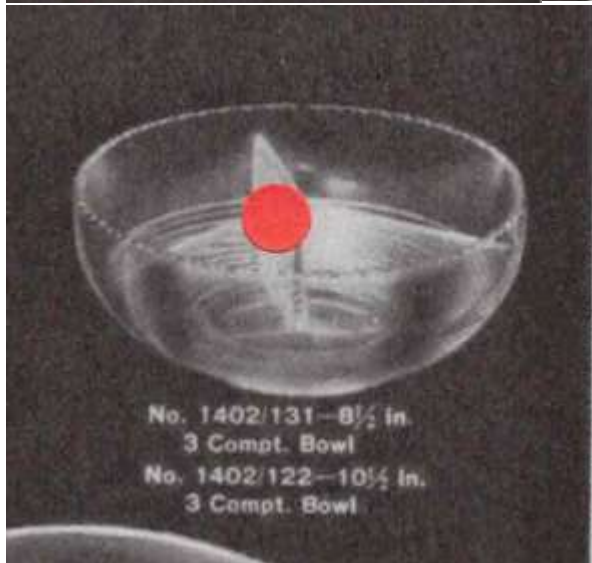
Handled 3 Section Rectangular
Tray
15 5/8 in, 3500 112



3500 64



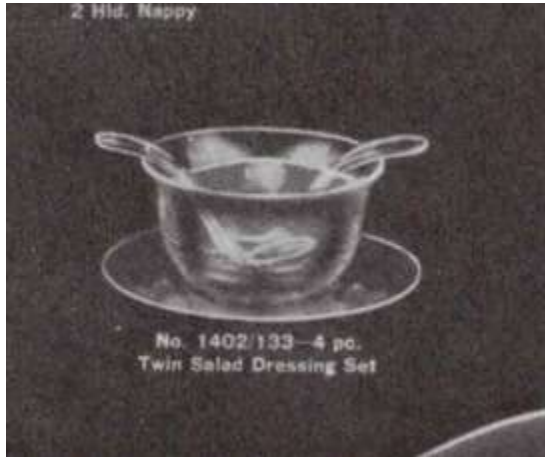
3400 200—11 in. 3 part Relish



No. 1402/131—8 1/2 in.
3 Compt. Bowl
No. 1402/122—10 1/2 in.
3 Compt. Bowl



3400/01—8 in.
3 Hld. 3 Part Relish

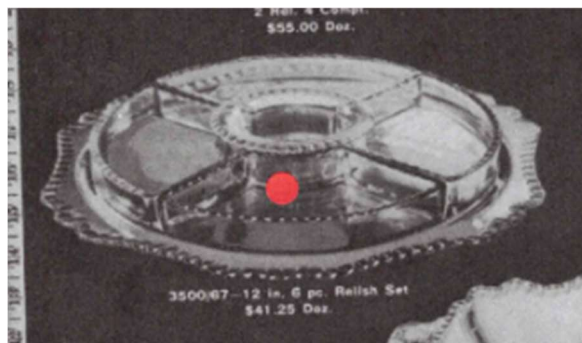


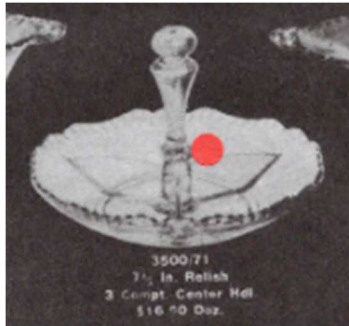
3400 2 Part Center Handled
Relish
7 in, 3400 1093

Handled 4-Part Oblong Relish
Dish
14 1/2 in, 3500 97

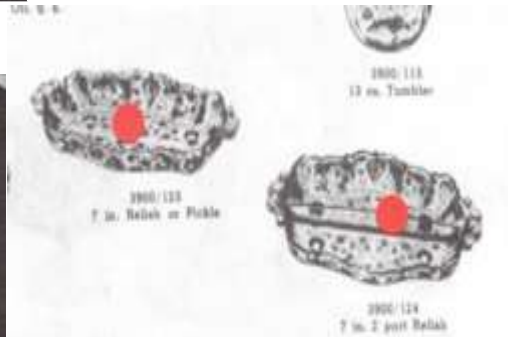


5 Part Relish
10 3/8 in, 393

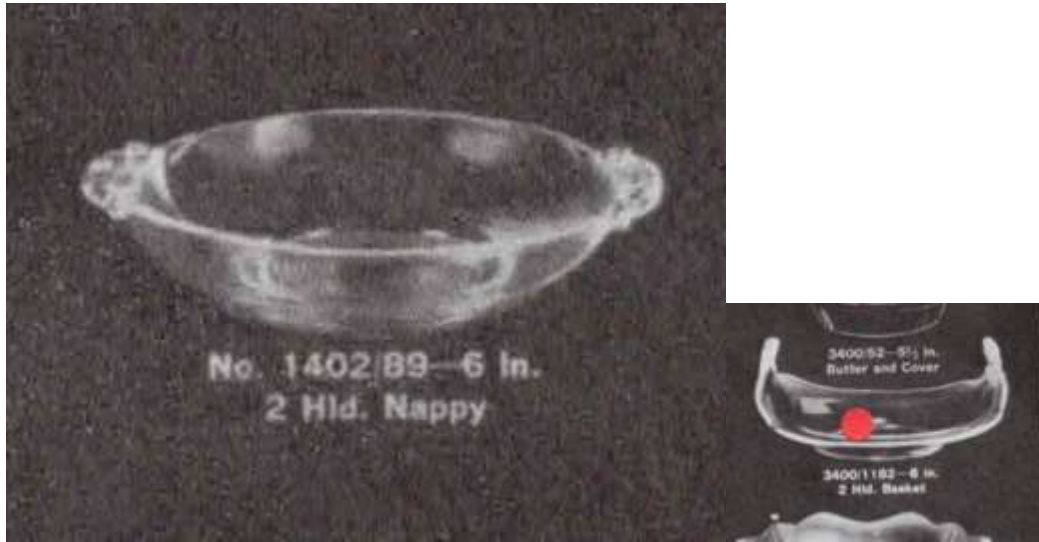




3400/88 2 Part Handled Relish
8 3/4 in, 3400 88



Pristine Shape 3-Part Relish
P 1498



Cocktail Icer, No Liner
3900/8 OPTIC



Handled Open Candy Dish
5 in, 3500 47



8" Handled Bon Bon
8 1/4 in, 3900 130



6" 1 Handled Nappy
6 3/4 in, 3500 50



3400/1179 Handled Bon Bon
7 1/2 in, 3400 1179 1.5"H



Mayonnaise Bowl, Underplate
and Ladle
5 1/4 in, 3900 129



3400 4 Toed Comport
2 3/4 in, 3400 74 4 3/4"W



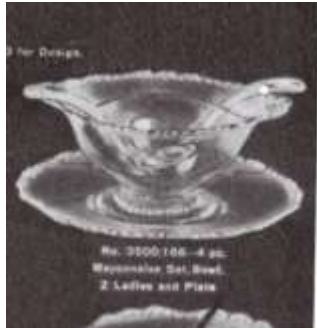
3400 4 Toed Comport-No
Handles
5 7/8 in, 3400 13



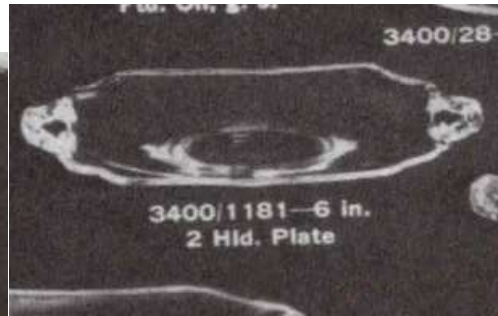
9" Handled Footed Plate
9 1/4 in, 3500 161



3400/1181 Handled Bon Bon
6 3/4 in, 3400 1180 DEEP



3400/204 Deep Cupped 4-Toed
Bon Bon
3 3/4 in, 3400 204





6" 2 Handle Basket with Sterling
Base
6 in, 3500 55



Mayonnaise Bowl and Ladle Set
3900 19/OPTIC



3400/203 Crimped 4-Toed Bon
Bon
3400 203



Celery Dish
11 5/8 in, P 248



3400/1179 Handled Bon Bon
7 1/2 in, 3400 1179 1.5"H



3400/59
9 in. 2-Hdl. Pickle Tray



6" Double Light Candlestick
6 in, 3900 72



A.



4" Single Light Candlestick
4 1/4 in, 3900 67



2" Candlestick (Shape 3500)
2 1/2 in, 3500 108

1 no etching

2 Sterling base



3" Single Light Candlestick
3 3/8 in, 628



5" KeyHole Candlestick
w/Round Base
5 in, 3400 646



Martha/495 2 Light Candlestick
3600 495



3400/647 2 Light Candlestick
(Round Base)
6 1/4 in, 3400 647



6" Three Light Candlestick
5 1/4 in, 3900 74



3400 2 Light Candelabrum w/ 2
Bobeches 16 Prisms
6 in, 3400 1268-LOW



2 Lite Candelabrum



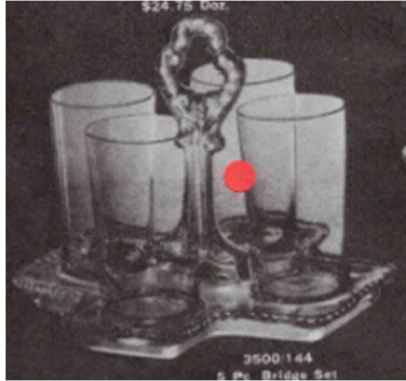
Virginian 502
2 Lite Candlestick



Leaf Shape Candleholder
6 3/4 in, P 500



Martha/497 Single Candlestick
with Prism
7 1/4 in, 3600 497



Water Goblet
8 3/8 in, 3121 10 OZ



Iced Tea
7 1/2 in, 3121 12 OZ



10 Oz Footed Tumbler
7 in, 3121



Seafood Cocktail & Liner
4 3/4 in, 968



2 Oz Footed Tumbler
4 1/2 in, 3121 2 1/2 OZ



Oyster or Fruit Cocktail
4 1/2 in, 3121 4 1/2 OZ





5 oz. Flat Tumbler

- - - H. S. A \$17.99



Liquor Cocktail
6 in, 3121 3 OZ



Champagne/Tall Sherbet
6 3/8 in, 3121 7 OZ



Low Sherbet
4 3/4 in, 3121 7 OZ



Cordial Glass
5 3/8 in, 3121 1 OZ



Parfait
6 1/4 in, 3121 5 1/2 OZ



3400/38 12 Oz Flat Tumbler
4 5/8 in, 3400 38

\$59.99



13 Oz Flat Tumbler
4 1/8 in, 3900 115 OPTIC

Rosepoint Inventory**7/9/23**

Optic flat tumbler	11
Flat Tumbler	11
3400/38 12 oz flat tumbler	5
Cordial Glass	20
Champagne Tall	16
Low Sherbet	15
Parfait	3
Water Goblet	20
2 Oz footed tumbler	6
Oyster Cocktail	13
3 oz Liquor Cocktail	9
5oz footed tumbler	9
12oz footed tumbler	15
10oz footed tumbler	11
Nut cups	5
3.5 oz wine	2
2.5 oz footed tumbler	6
Shrimp Cocktail	1
Finger bowls	2
Ashtrays	3
12 oz straight tumbler	6
Corn Holder	2



3400/38 80 Oz Non Optic Ball
Jug
6 1/4 in, 3400 38 NO OPTI



3400 / 152

*This image is a representation of this piece type.
The actual piece will be in your pattern.*

76 Oz Doulton Pitcher with
Modified Handle
3400 152



76 Oz Jug
7 3/4 in, 3900 115



Cocktail Shaker with #10 Top
(3400/175)
3400 175



Decanter & Stopper
11 in, 1321



3500/57 3 Part Covered
Candy/Relish
8 in, 3500 57



Round Covered Butter
5 1/2 in, 506



3900/138 Candy Box



3400 Round Butter with Lid,
Round Knob
6 3/4 in, 3400 52



Tall Candy Coquet with Lid (H X
W)
8 3/4 in, 3500 103



Footed Marmalade with Sterling
Lid
5 1/4 in, 157





6" Candy Box with Lid
6 in, P 306



3400/9 Four Toed Candy Dish
with Lid
7 1/4 in, 3400 9



Footed Candy Box and Lid
5 1/4 in, 3900 16SSM BASE



Rams Head Handles Candy Box
with Lid
6 3/4 in, 3500 78



3 Part Candy Dish & Lid
P 299



Cheese Stand (Shape 3500)
4 in, 3500 163



Round Compote (Height X
Width)
5 in, 3500 148



5" Footed Compote
5 1/2 in, 3900 136



3400/28 (H X W) Compote
5 1/2 in, 3400 28



3400 7" Height X 7" Width Tall
Compote
7 3/8 in, 3400 14

1 no etching on base

1 etching on base



Tray only



Shaker Set with Glass/Lid Bases
1468, EGG



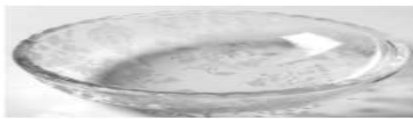
Shaker Set with Glass Lid/Bases
1471, BALL



Shaker Set with Plastic Lids
3 1/4 in, 3900 1177OPTIC



Shape 3500 Flat Finger Bowl
Only
5 in, 3500



4 1/4" Round Ashtray (Shape
3500)
4 3/8 in, 3500 127



Bell
6 in, 3121



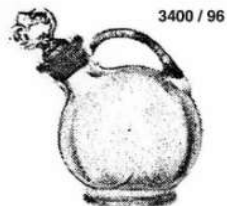
Corn Holder
9 1/2 in, 477



3400 4 Toed Nut Cup
15/8 in, 3400 71



Oil Cruet & Stopper
6 in, 3900 100



3400 / 96

*This image is a representation of this piece type.
The actual piece will be in your pattern.*

Shape 3400 Oil Cruet with
Stopper, 2 Oz
3400 96

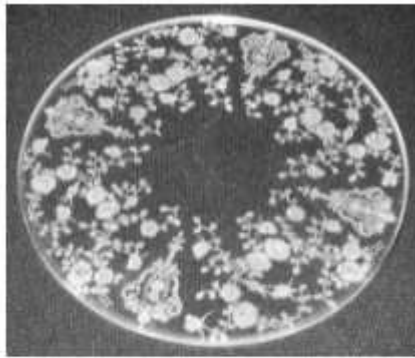


3500 Fingerbowl
\$6.60 Daz.

3500 Fingerbowl Plate
\$4.60 Daz.

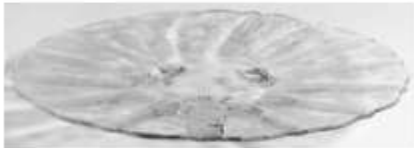


Cigarette Holder
4 1/4 in, 1337



Trivet
5 in, NO#

With sterling base



11" 3-Toed Plate
11 1/2 in, 3900 26



Handled Cake Plate
14 1/2 in, 3900 35



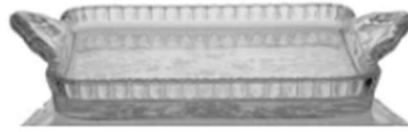
er
Handled Torte Plate (Shape
3500)
15 3/8 in, 3500 110



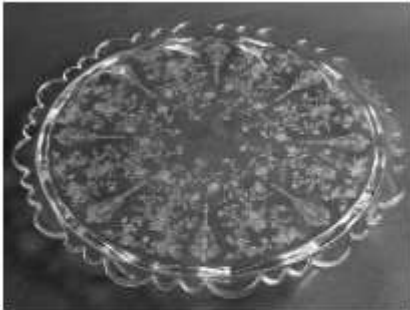
14" Scalloped Edge Torte Plate
14 1/2 in, 3900 167



3400/10 Center Handled Tray
10 in, 3400 10



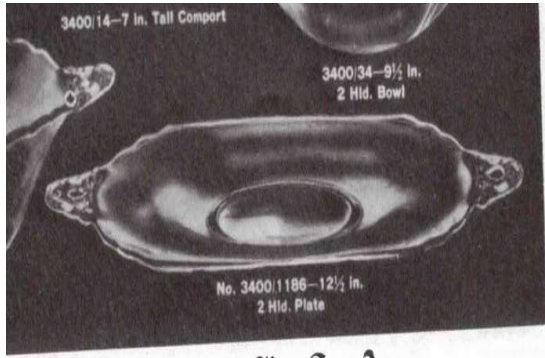
Square Tray
8 in, 3500 91



Martha/170 13" Toed Cake
Plate
13 1/4 in, 3600 170



Large Rolled Edge Torte Plate
14 in, 3900 166



re, Ohio - - - U. S. A.



#1402 Ice Bucket W/Detachable Handle
5 3/4 in, 1402 52



3400/851 Ice Bucket with Handle
5 3/4 in, 3400 851



#1705 Ice Bucket W/Detachable Handle & Tongs
5 3/4 in, 1705



Ice Bucket with Detachable Handle
6 1/2 in, P 672



Ice Bucket
5 5/8 in, 3900 671



Individual Creamer (Shape 3500)
2 3/4 in, 3500 15



Individual Open Sugar (Shape 3500)
2 1/4 in, 3500 15



Individual Creamer Shape 3900
3 1/8 in, 3900 40



Mini Open Sugar
2 5/8 in, 3900 40



Individual Creamer Pristine
Shape
2 3/8 in, P 253



Mini Open Sugar
2 in, P 253



Creamer (Shape 3500)
4 in, 3500 14



Open Sugar Bowl (Shape 3500)
3 in, 3500 14



3400/68 Open Footed Sugar
3 in, 3400 68



3400/68 Footed Creamer
3 1/2 in, 3400 68



3400 13" 4 Toed Fancy Edge Bowl
13 in, 3400 48



Rose Point



3400/48
11 in. 4 Fid. Bowl,
Fancy edge



Bowl-Salad/Sterling Base 10"
10 in, P427,WASROSEPT



11" Round Bowl
11 in, 1399



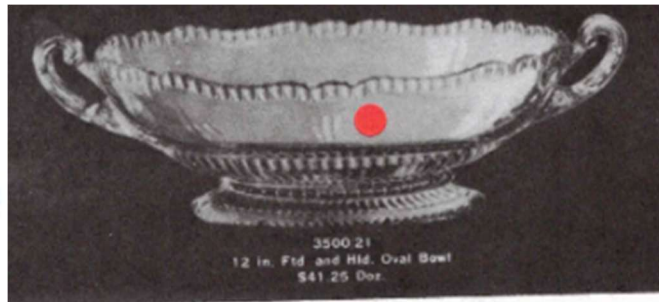
10" Round Flared Bowl
10 1/2 in, 1359



9" Handled Bowl (3400 Shape)
11 3/4 in, 3400 34



3400 Oblong Ruffled Four Toed
Bowl
11 3/4 in, 3400 160



12" Oval 4-Toed Handled Bowl
12 in, 3900 65



13" Shallow Round Bowl
13 in, 1398



12" Caprice Shape 4 Toed
Handled Oval Bowl
12 5/8 in, 66



3400 12" 4 Toed Oval Bowl
12 3/4 in, 3400 1240



3400 12" Square 4 Toed Bowl
12 1/2 in, 3400 4



11" Handled Bowl
11 1/2 in, 3900 34



9" 3-Toed Footed Bowl
9 7/8 in, 3900/54



Footed Crimped Bowl
12 1/4 in, 1349



9" Sterling Base Round Bowl
9 1/4 in, NO #

Wallace Sterling

Dinner Fork	11
Salad Fork	11
Soup Spoon	12
Tea Spoon	12
Dinner Knife	12
Ind. Butter Knife	11

Wallace Silverplate

Coffee Pot
Waste Dish

Pope Gosser China

Gravy Boat	
Cream	
Sugar	
Dinner plates	4
Cup	3
Saucer	1
Oval Vegetable	
Cream Soup/Saucer	2
Dessert Plate	4
Bread Plate	3
Cream Soup	4
Rimmed Soup	4
Fruit Bowl	3